

100/150 CFM FEATURES

- 6" round metal duct connector
- Single, impact-resistant centrifugal blower wheel housing
- 20 gauge galvanized steel housing
- Duct horizontally, vertically, or in-line with a separate adapter
- Low profile, white polymeric or painted white enamel metal grille
- Models L100L and L150L are UL Listed for use over bathtubs or showers when connected to a GFCI branch circuit
- Model 80L Variable Speed Control adjusts blower speed and sound level (available separately)

200/250/300 CFM FEATURES

- 8" round metal duct connector
- Single, impact-resistant centrifugal blower wheel (Model L300KMG has a metal wheel)
- 20 gauge galvanized steel housing
- Duct horizontally, vertically, or in-line with a separate adapter
- Models L200L, L250L and L300L are UL Listed for use over bathtubs or showers when connected to a GFCI branch circuit
- Model 80L Variable Speed Control adjusts blower speed and sound level (available separately)

SPECIAL FEATURES FOR

Model L300KMG

- Removable access panel; Suitable for kitchen use

Models L100L, L150L

- Removable access panel, no insulation
- Two 6" round duct connectors
- No grille

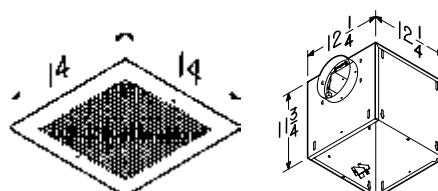
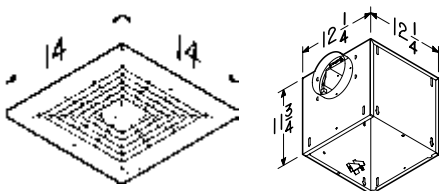
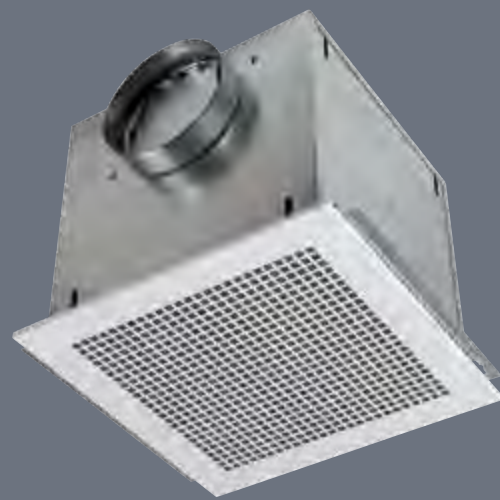
Models L200L, L250L, L300L

- Suitable for kitchen installations
- Removable access panel, no insulation
- Two 8" round duct connectors

L100 | L150 | L200 | L250 | L300
POLYMERIC GRILL



L100MG | L150MG | L200MG | L250MG, L300MG | L300KMG
METAL GRILL



Metal grilles are not acceptable for use over tub or shower.

100–300 CFM Specifications

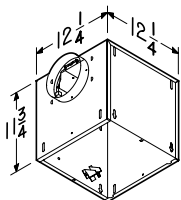
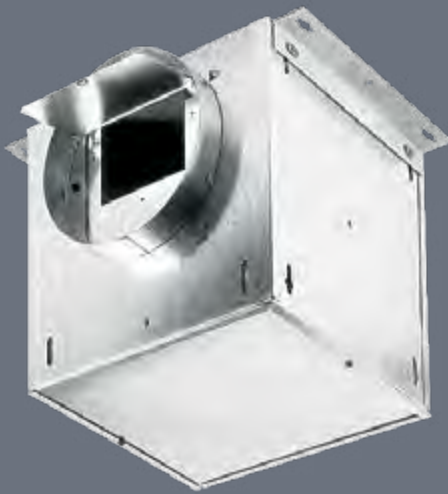
Model	CFM	Sones	Amps	Sound Insulation	Notes
White Polymeric Grill					
L100	109	0.9	1.1	Yes	
L150	157	1.5	1.3	Yes	
L200	210	1.7	1.8	Yes	
L250	259	2.2	2.1	Yes	
L300	308	2.9	2.6	Yes	
White Metal Grill					
L100MG	115	0.9	1.1	Yes	
L150MG	161	1.4	1.3	Yes	
L200MG	215	1.9	1.8	No	
L250MG	265	2.5	2.1	No	
L300MG	316	3.0	2.6	No	
L300KMG	277	3.1	2.6	No	
In-line Ventilator					
L100L	106	0.7	1.1	No	No Grille
L150L	147	1.1	1.3	No	No Grille
L200L	195	1.9	1.8	No	No Grille
L250L	245	2.3	2.1	No	No Grille
L300L	293	3.1	2.6	No	No Grille

See page 71 for CFM details.

FOR EVERY
VENTILATION NEED



L100L | L150L | L200L | L250L | L300L IN-LINE VENTILATORS



MODEL 80L

- Adjust ventilation easily in any room
- Variable Speed Control mounts inside the fan housing and allows blower speed adjustment
- For Broan High Capacity Fans L100–L900
- Speed control with metal housing
- Fan insulation is perforated for easy installation
- 120V, 3 amps, 60 Hz

80L VARIABLE SPEED CONTROL



900/1500/2000 CFM FEATURES

- 8" x 12" duct
- Painted white enamel metal grille
- Single, impact-resistant centrifugal blower wheel
- Ducted horizontally or vertically, or in-line with separate adapter
- Model 80L Variable Speed Control adjusts blower speed and sound level (available separately)
- Not for use over tub or shower

Models L900, L1500 (shown)

- L900 can use the 80L variable speed blower control (sold separately)

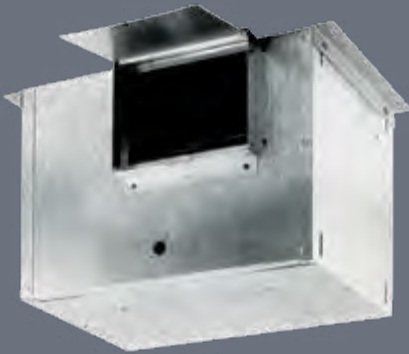
Models L900L, L1500L

- Removable access panel; no insulation
- Can use the 80L variable speed blower control (sold separately)

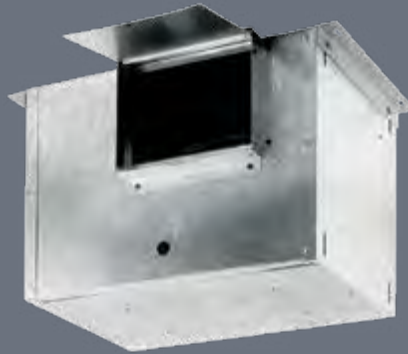
Model L2000L

- 38"L x 14⁵/₈"W x 14⁵/₈"H
- Fits 7³/₄" x 33³/₄" duct
- Optional metal grille (Model G102) and damper kit (Model D100)

L900 | L1500*
METAL GRILLE



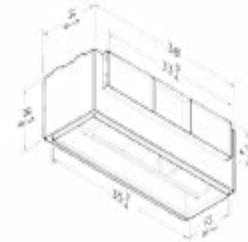
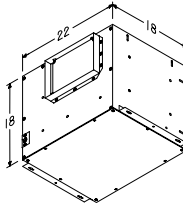
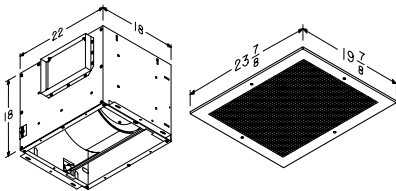
L900L | L1500L
IN-LINE VENTILATORS



L2000L
IN-LINE VENTILATORS



Shown with optional metal grille (Model G102) and damper kit (Model D100).



80L
VARIABLE SPEED CONTROL



900–2000 CFM Specifications

Model	CFM	Sones	Amps	Notes
L900	901	4.1	3.0	Painted white enamel metal grille
L1500	1513	8.4	5.0	Painted white enamel metal grille
L900L	894	3.8	3.0	In-line
L1500L	1214	6.7	5.0	In-line
L2000L	1791	9.4	5.8	In-line

See page 71 for CFM details.

Metal grilles are not acceptable for use over tub or shower.

MODEL 80L

- Adjust ventilation easily in any room
- Variable Speed Control mounts inside the fan housing and allows blower speed adjustment
- For Broan High Capacity Fans L100–L900L
- Speed control with metal housing
- Fan insulation is perforated for easy installation
- 120V, 3 amps, 60 Hz