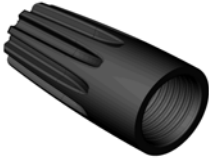




**MODELS 71B-73B 59B**

**HIGH TEMPERATURE  
WIRE-NUT®  
WIRE CONNETORS**

**FEATURES/BENEFITS:**



- HOUSING DESIGNED TO WITHSTAND 150C APPLICATIONS
- WELDED, ONE-PIECE SPRING AND HOUSING PREVENTS SEPARATION
- RIBBED HOUSING DESIGNED TO MAKE UP QUICKLY IN AUTOMATED ASSEMBLY EQUIPMENT
- NEW SPRING DESIGN WORKS BETTER ON STRANDED WIRE AND PROVIDES MORE HOLDING POWER
- WIDE SKIRT ACCOMODATES RANGE OF WIRE INSULATIONS/COMBINATIONS

**ELECTRICAL:**

VOLTAGE: 71B/72B 300 V MAX  
73B/59B 600 V MAX\*

\*SIGNS/LUMINARES 1000V

**APPLICATION TOOLING:**

- ACAM (AUTOMATIC CONNECTOR APPLICATION MACHINE)
- Wire-Nut® Wire Connector Sockets

**PHYSICAL:**

HOUSING: THERMOPLASTIC POLYESTER  
INSERT: STEEL  
PLATING: ZINC  
TEMPERATURE: 150 C (302 F)

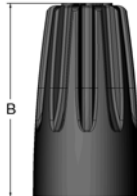
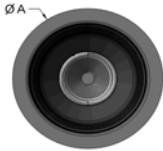
**STANDARDS & SPECIFICATIONS:**

UL 486C  
UL 94V-0 FLAME RATING  
CSA- C22.2 NO. 188  
RoHS COMPLAINT

**WIRE RANGE:**

MODEL	71B Black	72B Black	73B Black	59B Black
STRIP LENGTH	SOLID: 1/4" (6,4mm)	3/8" (9,5mm)	5/16" (7,9mm)	1/2" (12,7mm)
	STR: 5/16" (7,9mm)	3/8" (9,5mm)	5/16" (7,9mm)	1/2" (12,7mm)
- Solid and/or stranded wire combinations unless stated otherwise - Consult factory for other combinations not listed	300V MAX: 1 #14 1 or 2 #16 1 #18 str. 2 or 3 #18 2 to 4 #20 2 #22 str. 3 or 4 #22 5 #22 sol.	300V MAX: 1 #14 str. 1 #16 str. 2 or 3 #16 1 #18 str. 2 to 4 #18 3 to 5 #20 2 #22	300V MAX: 3 or 4 #16 5 #18 3 to 5 #20 5 #22 600V MAX: 1 or 2 #14 1 #16 str. 2 #16 1 #18 str. 2 to 4 #18	600V MAX: 1 #12 1 to 3 #14 1 #16 Str. 1 #18 Str. 2 to 4 #16 2 to 6 #18 2 to 6 #20 4 to 6 #22

**DIMENSIONS:**



Model	A (in)	A (mm)	B (in)	B (mm)
71B	0.33	8,3	0.58	15
72B	0.39	10	0.70	18
73B	0.44	11	0.86	22
59B	0.48	12	1.06	27

**ORDERING INFO:**

CATALOG #	MODEL	COLOR	PACKAGE TYPE:	WEIGHT LBS (KG):
30-251	71B	Black	Keg of 25,000	35.0 (15.9)
30-801	71B	Black	Drum of 150,000	210.0 (95.3)
30-252	72B	Black	Keg of 10,000	23.0 (10.4)
30-802	72B	Black	Drum of 85,000	195.0 (88.5)
30-253	73B	Black	Keg of 10,000	35.0 (15.9)
30-803	73B	Black	Drum of 50,000	185.0 (83.9)
30-259	59B	Black	Keg of 5,000	22.0 (10.0)
30-809	59B	Black	Drum of 35,000	172.0 (78.0)

**FACTORY CONTACT:**

ENGINEERED SOLUTIONS  
IDEAL INDUSTRIES, INC.  
BECKER PLACE SYCAMORE IL  
USA 60178  
P: 1-800-324-9571  
F: 1-888-222-6140  
E: oem@idealindustries.com

**SALES CONTACT:**