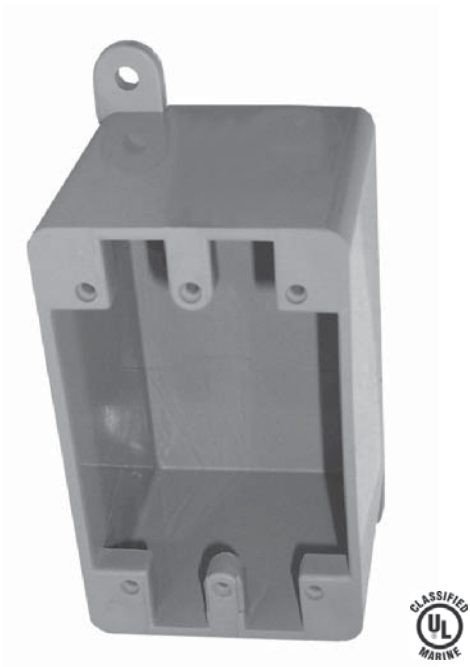
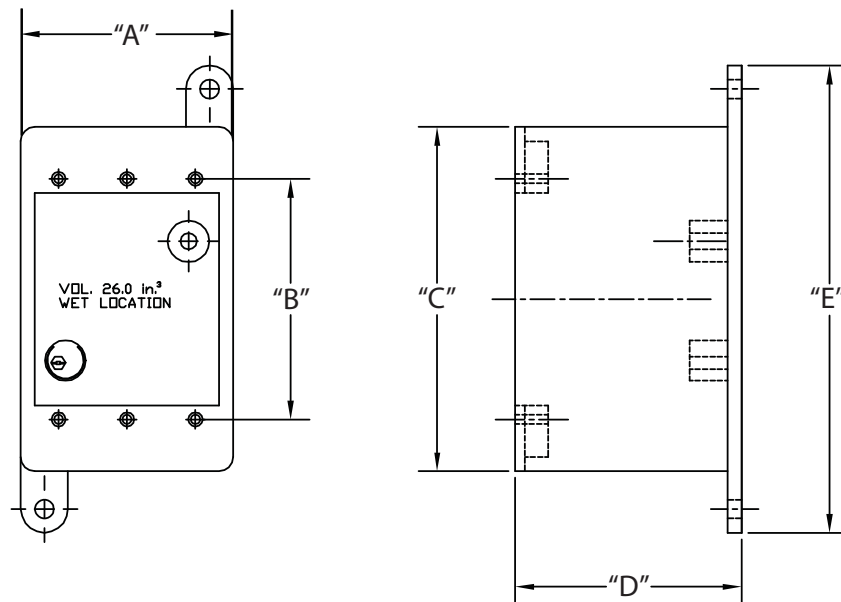


## Type FD Blank Single Gang Box



Used mainly for telecommunications applications. An entrance must be cut in the floor or sidewall of the box and an adapter used to connect the conduit run.



Part Number	Trade Size	Carton Quantity	"A"	"B"	"C"	"D"	"E"
5133420	--	10	2.813	3.313	4.563	3.000	6.375

Dimensions are nominal