



# Juno Wafer™ LED Downlight Series

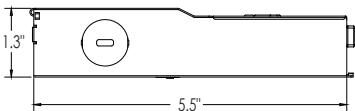
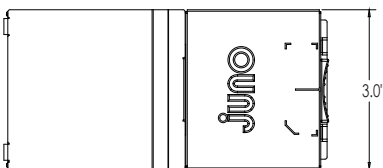
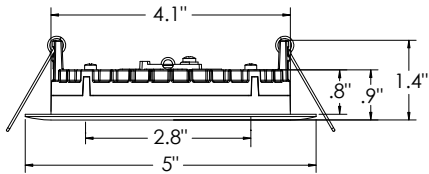
## 4" LED Regressed Switchable Downlight

### 650 Lumens

### WF4 REG SWW5 Series



### Dimensions



|                |
|----------------|
| Project:       |
| Fixture Type:  |
| Location:      |
| Contact/Phone: |

### Product Features

The 4" regressed round baffle with 5CCT Switchable White technology provides high-quality light output and efficiency featuring a switch for easy color temperature adjustment to choose between 2700K, 3000K, 3500K, 4000K, or 5000K - while eliminating the need for recessed housings.

- Regressed lens and baffle trim design to reduce glare for comfortable and even illumination
- Canless - no can required; equals easy to install and less labor
- 5 selectable color temperatures to choose with a switch ranging from warm (2700K) to daylight (5000K) allowing customization for endless applications

### Applications

- Residential and light commercial including multi-family, hotels, assisted living, dormitories and other multi-level construction
- Shallow slim profile allows for easy retrofit, remodel or new construction insulated and drop ceiling installations
- Wet rated and airtight: perfect for showers, bathrooms, and outdoor soffits

### Performance

|                       |  |
|-----------------------|--|
| Delivered Lumens      | 650L Nominal at 3000K  |
| LED Color Temperature | Switchable White (27K, 30K, 35K, 40K, 50K)<br>Default set at 3000K |
| CRI                   | 90CRI  |
| Voltage               | Dedicated 120V   |
| Dimming               | Dimmable to 10% only with triac dimmers                            |

For a list of compatible dimmers see JUNO-WAFERS-DIM

### Specifications

|                  |      |
|------------------|------|
| Aperture:        | 2.8" |
| Ceiling opening: | 4.2" |
| Overlap trim:    | 5"   |
| Height:          | 1.4" |
| Lens regression: | .5"  |



# Juno Wafer™ LED Downlight Series

## 4" LED Regressed Switchable Downlight

### 650 Lumens



### ORDERING INFORMATION

#### Downlight

Example: WF4 SWW5 90CRI MW

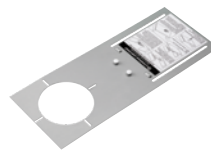
| Series  | Trim Style           | Color Temperature  | Rendering Index |         | Finish                |
|---|----------------------|--|-----------------|---------|-----------------------|
| <b>WF4</b> 4" Regressed Baffle LED Downlights | <b>REG</b> Regressed | <b>SWW5</b> Switchable White (2700K, 3000K, 3500K, 4000K, 5000K) | <b>90CRI</b>    | 90+ CRI | <b>MW</b> Matte White |

#### Accessories: Order as separate catalog number.

| Series                    |  |
|---------------------------|--|
| <b>WF8643 PAN U</b>       | Universal New Construction Pan             |
| <b>WF4 PAN R12</b>        | 4" new construction pan, retail pack of 12 |
| <b>WF4GR MW JZ</b>        | 4" Goof Ring                               |
| <b>WFJB U</b>             | Remodel Joist Bar                          |
| <b>WFEXC6 SW3PIN FT4</b>  | 3-Pin 6ft Cable                            |
| <b>WFEXC10 SW3PIN FT4</b> | 3-Pin 10ft Cable                           |
| <b>WFEXC20 SW3PIN FT4</b> | 3-Pin 20ft Cable                           |



WF8643 UNIVERSAL  
New Construction Pan



WF4 PAN  
4" New  
Construction Pan



Remodel Joist Bar



WFEXCx  
3-Pin Cable

### PERFORMANCE DATA

| WF4 REG SWW5          |  |
|-----------------------|--|
| Input Voltage         | 120V                                     |
| Input Power Typical   | 9W (+/-5%)                               |
| Frequency             | 60 Hz                                    |
| EMI/RFI               | FCC Title 47, Part 15 Class B (consumer) |
| Minimum Starting Temp | -40°F (-40°C)                            |

**Note:** Actual performance may differ as a result of end-user environment and application. All values are design or typical values, measured under laboratory conditions at 25°C.

| LIGHTING PERFORMANCE DATA<br>DONNÉES SUR LE RENDEMENT<br>DE L'ÉCLAIRAGE |                                 |
|---|---------------------------------|
| Light Appearance (CCT)<br>Aspect de la lumière (CCT)                    |                                 |
| <b>2700K</b> soft white   blanc doux                                    | 640 lumens   71 lumens per watt |
| <b>3000K</b> warm white   blanc chaud                                   | 650 lumens   72 lumens per watt |
| <b>3500K</b> neutral white   blanc neutre                               | 660 lumens   73 lumens per watt |
| <b>4000K</b> cool white   blanc froid                                   | 670 lumens   74 lumens per watt |
| <b>5000K</b> daylight   blanc neutre                                    | 680 lumens   75 lumens per watt |
| Watts   | <b>9</b>                        |
| Color Accuracy (CRI)<br>Précision des couleurs (CRI)                    | <b>90</b>                       |



# Juno Wafer™ LED Downlight Series

## 4" LED Regressed Switchable Downlight

### 650 Lumens



## Specifications

### Housing

Die cast aluminum mounting frame with integral polycarbonate flange provides passive thermal cooling achieving L70 at 50,000 hours • Lens regressed to .5" with baffle trim design to reduce glare for comfortable and even illumination

- FT4 3-pin plenum rated cable connector to connect from module to remote driver box
- Steel spring clip for easy installation. 4" cut out template is provided to ensure a correct sized hole is cut into ceiling for proper installation of the trim. Size of hole should not exceed 4 ¼ inches for this product
- Can be installed from 3/8" to 1 ½" ceiling thickness
- Can be removed from below the ceiling for service or replacement.

### LED Light Engine

LEDs are integrated to one piece high purity aluminum, thermally conductive housing to provide uninterrupted heat transfer to ensure long life of the LED

- Switchable white color temperature from 2700K, 3000K, 3500K, 4000K, 5000K • 90 CRI minimum • Color accuracy within 4 step McAdams Ellipse at the end CCT (2700K and 5000K), within 6 step McAdams Ellipse in the middle CCT (3000K, 3500K, and 4000K)
- Dimming 100% to 10% with most standard incandescent dimmers (see list of approved dimmers).

### Driver

Connect directly to 120V Class-2 (CAN ICES-005 (B) / NMB-005 (B)) LED driver. 120V 60 Hz constant current driver provides noise free operation

- IC rated driver with convenience of a switch to choose between 5 selectable color temperature options ranging from 2700K (warm white), 3000K, 3500K, 4000K, or 5000K (daylight)
- The isolated driver integrated inside steel remote box with four 7/8" knockouts with slots for pryout. Suitable for pulling wires with the 12 cubic-inch wiring compartment to accommodate up to (6) 14 gauge insulated conductors; making the Wafer LED Downlights much easier to wire in 2in/2out (plus ground) daisy-chain applications and contractor friendly
- 3" plenum space required for installation of the remote driver box.

### Optical System

Edge-lit LED technology uses light guided plate to distribute light • Polycarbonate lens provides even illumination throughout the space • Efficient system that can produce over 650 lumens while using 9W • Replaces 65W incandescent.

### Life

Rated for 50,000 hours at 70% lumen maintenance.

### Labels

CSA certified to US and Canadian safety standards • ENERGY STAR® certified product • Suitable for wet location • Air-Loc certified in accordance with ASTM E283-2004 • NOM Certified • Can be used to comply with California Title 24 Part 6 High Efficacy LED light Source Requirements • U.S. Patent No. 10,681,784.

### Testing

All reports are based on published industry procedures; field performance may differ from laboratory performance.

Warranty 5-year limited warranty. Complete warranty terms located at: [www.acuitybrands.com/CustomerResources/Terms\\_and\\_conditions.aspx](http://www.acuitybrands.com/CustomerResources/Terms_and_conditions.aspx)

Specifications subject to change without notice.



# Juno Wafer™ LED Downlight Series

## 4" LED Regressed Switchable Downlight

### 650 Lumens

### PHOTOMETRICS

Distribution Curve

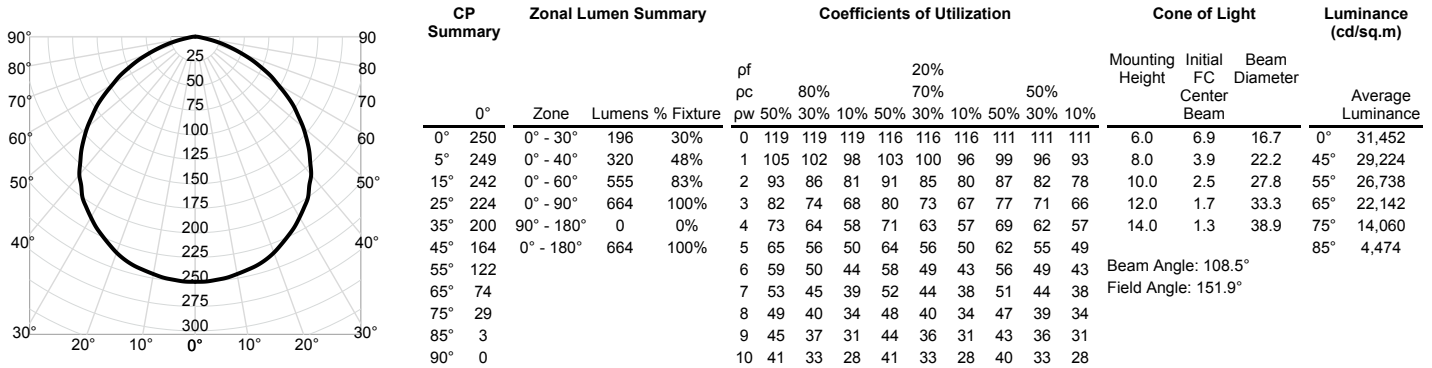
Distribution Data

Output Data

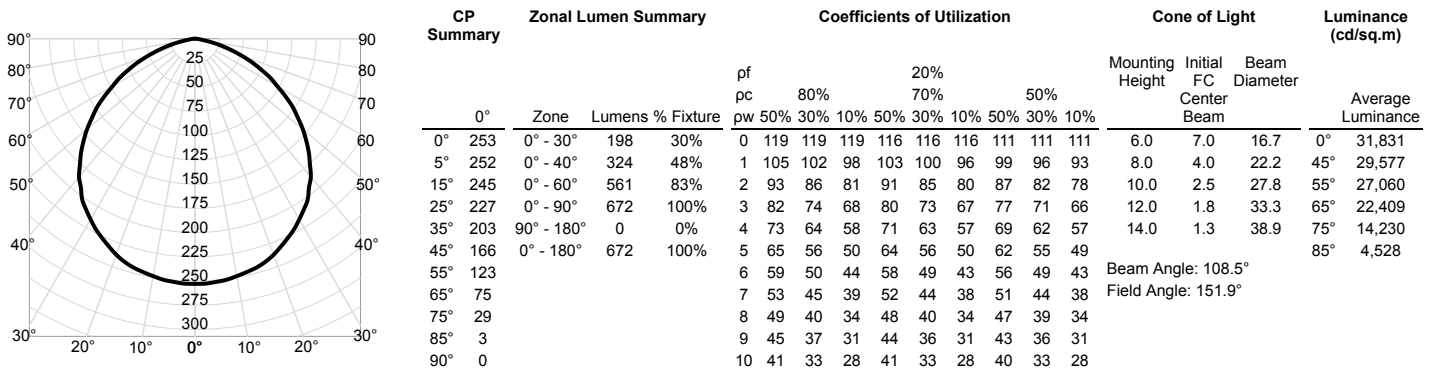
Coefficient of Utilization

Illuminance Data at 30" Above Floor for a Single Luminaire

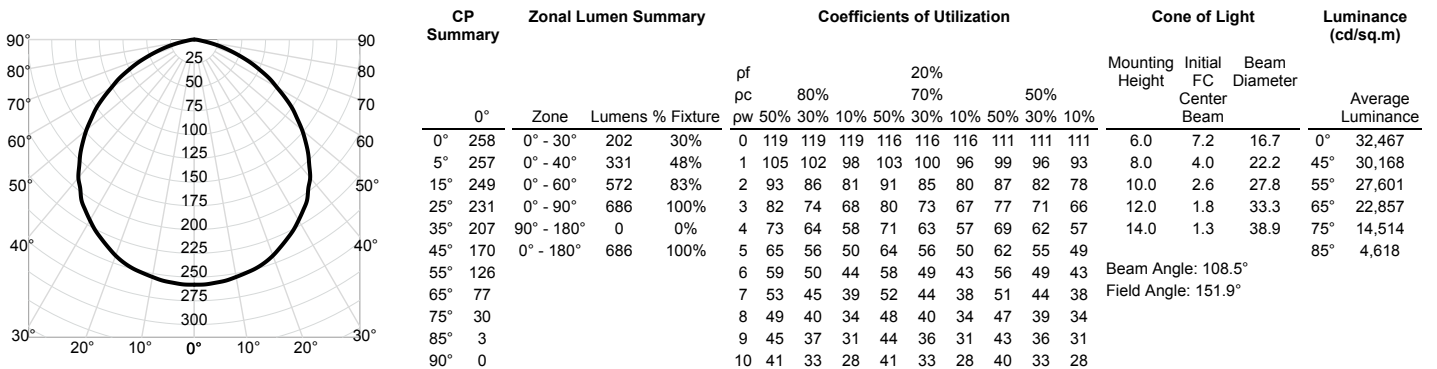
**WF4 REG SWW5 90CRI\_2700K** Input Watts: 9.0, Delivered Lumens: 664, LPW: 73.8, S/MH: 1.26, Test No: ISF 202635P1



**WF4 REG SWW5 90CRI\_3000K** Input Watts: 9.0, Delivered Lumens: 672, LPW: 74.7, S/MH: 1.26, Test No: ISF 202635P2



**WF4 REG SWW5 90CRI\_3500K** Input Watts: 9.0, Delivered Lumens: 686, LPW: 76.2, S/MH: 1.26, Test No: ISF 202635P3





# Juno Wafer™ LED Downlight Series

## 4" LED Regressed Switchable Downlight

### 650 Lumens

### PHOTOMETRICS

Distribution Curve

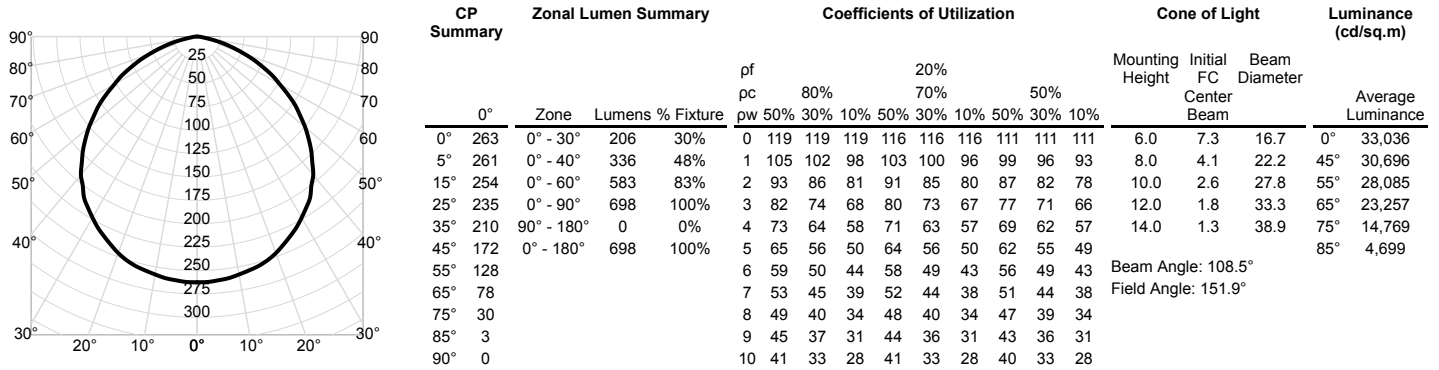
Distribution Data

Output Data

Coefficient of Utilization

Illuminance Data at 30" Above Floor for a Single Luminaire

WF4 REG SWW5 90CRI\_4000K Input Watts: 9.0, Delivered Lumens: 698, LPW: 77.6, S/MH: 1.26, Test No: ISF 202635P4



WF4 REG SWW5 90CRI\_5000K Input Watts: 9.0, Delivered Lumens: 697, LPW: 77.4, S/MH: 1.26, Test No: ISF 202635P5

