

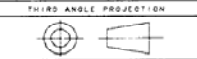
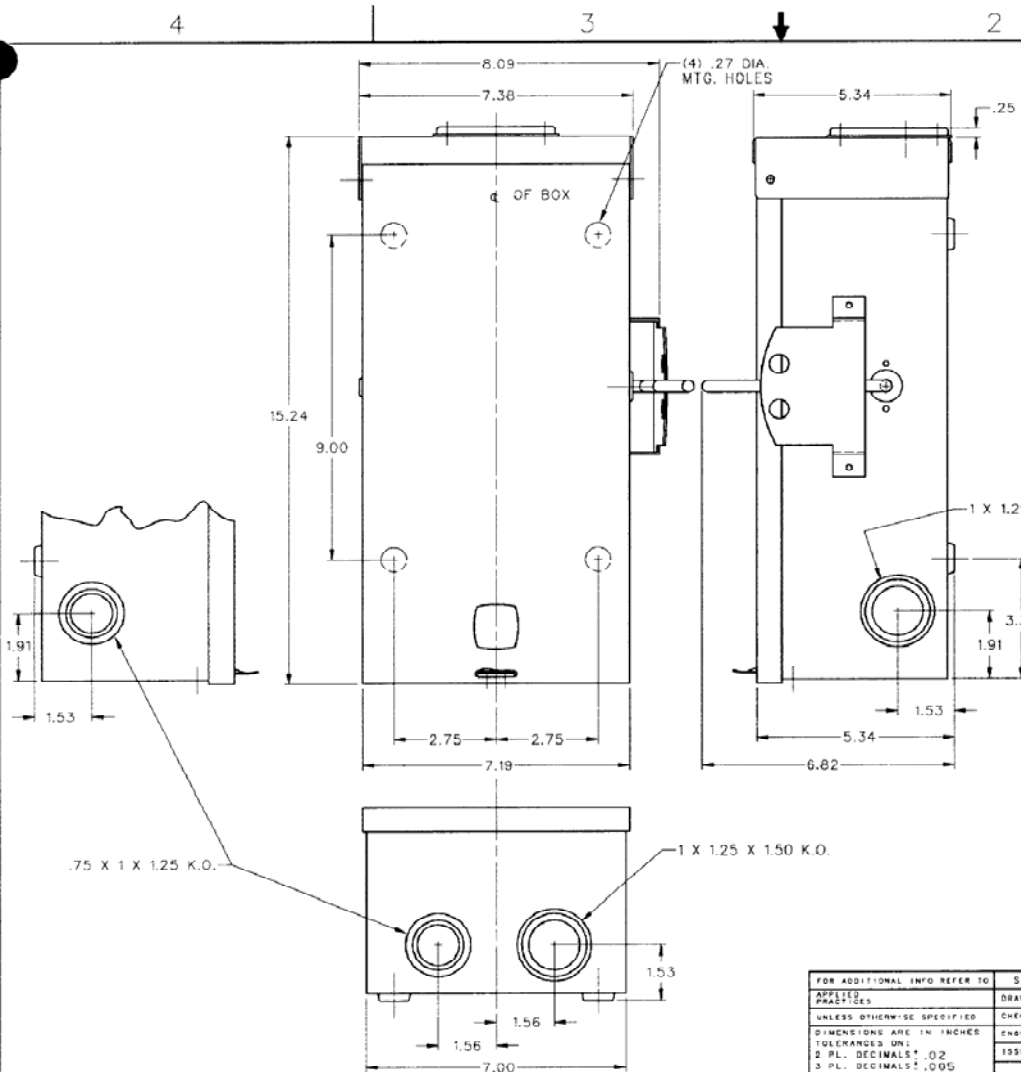
208C2473

REVISIONS			
REV	DESCRIPTION	DATE	APPROVED
1	92PD002	2-28-92	SRT
2	92PD002A	6-1-92	SRT
3	93PD052	DAK 11-01-93	
4	93PD052A	DAK 12-20-93	/K

CAT NO.	MOD NO.	POLES	AMPS
TC10323R	9	2	100

UNIVERSAL HUB	
CONDUIT SIZE	CAT. NO.
.75	TC75
1.00	TC100
1.25	TC125
1.50	TC150
CLOSING CAP	TCCP

SPEC-SETTER SAFETY SWITCH
100A OUTDOOR SWITCH OUTLINE



GE (USA) CONFIDENTIAL AND PROPRIETARY
This GE document contains confidential and proprietary information of GE Electrical Distribution & Control (ED&C). It is issued on condition that it and the information therein shall not be used by recipient nor be disclosed to others except as expressly approved by ED&C. Any document containing such information shall be returned on request.

FOR ADDITIONAL INFO REFER TO APPLIED PRACTICES	SIGNATURES	DATE
UNLESS OTHERWISE SPECIFIED DIMENSIONS ARE IN INCHES TOLERANCES UN: 2 PL. DECIMALS ± .02 3 PL. DECIMALS ± .005 ANGLES: FRACTIONS ±	DRAWN SRT	3-27-91
• CALMA • GENERATED	CHECKED	
	ENGR	
	ISSUED	

GE ED&C PLAINVILLE, CONN.

TITLE
100A O/D SW OUTLINE

FIRST MADE FOR TC DOUBLE THROW SWITCH

DRAWING FILE
D1404056

MODEL FILE

SIZE C

SCALE

CONT ON SH 2

208C2473