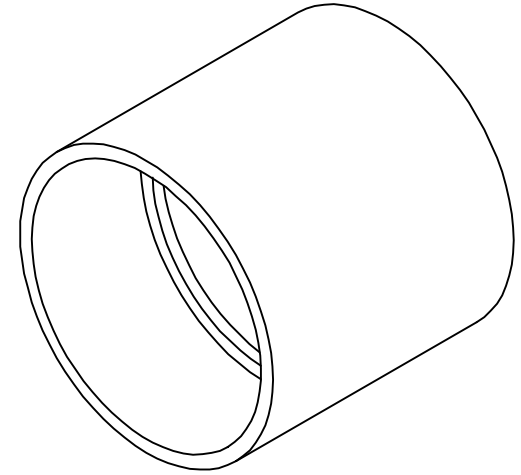
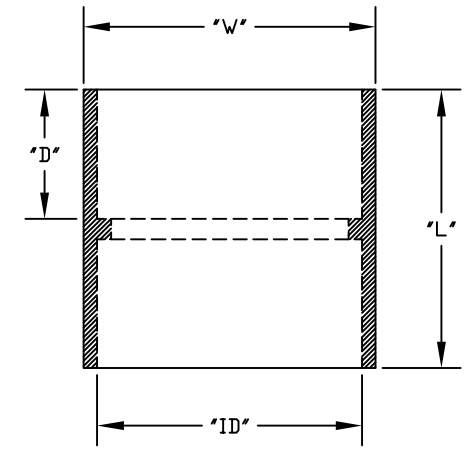


PART NUMBER	TRADE SIZE	"W"	"L"	"ID"	"D"
6141623	1/2"	1 1/16"	1 1/2"	7/8"	5/8"
6141624	3/4"	1 5/16"	1 9/16"	1 1/16"	5/8"
6141625	1"	1 5/8"	2"	1 5/16"	1"
6141626	1 1/4"	2"	2 1/8"	1 11/16"	1"
6141627	1 1/2"	2 1/4"	2 3/8"	1 15/16"	1 1/8"
6141628	2"	2 1/16"	2 7/16"	2 3/8"	1 1/4"
6141629	2 1/2"	3 1/4"	3 1/2"	2 7/8"	1 3/4"
6141630	3"	4"	3 7/8"	3 1/2"	1 13/16"
6141631	3 1/2"	4 1/8"	4"	4"	1 15/16"
6141632	4"	5"	4 3/16"	4 1/2"	2"
6141633	5"	6 1/8"	5 3/8"	5 5/8"	2 1/2"
6141634	6"	7 1/4"	6 3/8"	6 5/8"	3"
*6141635D	8"	N/A	N/A	N/A	N/A



UL Listed UL651
 UL File # E81590
 UL Category Code DWTT
 UL Control Number 93G7
 Meets NEMA TC3 Requirements
 CSA Certified
 See NEC Article 352 for use
 Material is Rigid PVC



* Not UL Listed



CANTEX INC. Fort Worth, TEXAS		
Couplings Schedule 40 & 80 Fittings		
Drawn By: CD Branch	Date: 09/12/07	Ref.